

Tammy Antrobus, REALTOR®
(250) 488-0804
tammy@remax.net

For more property information go to:
www.TAMMYANTROBUS.COM

Providing a customized approach to your real estate needs with
patience, professionalism and expertise



RE/MAX Orchard Country
13012 Victoria Rd, Summerland, BC V0H 1Z0
(250) 494-8881

Each Office Independently Owned and Operated

The above information is from sources deemed reliable it should not be relied upon without independent verification.
Not Intended to solicit properties already listed for sale.*



COMPLIMENTS OF:

TAMMY ANTROBUS, Realtor®



**ATTENTION INVESTORS
THIS LOT IS PERFECT FOR A SPEC HOME**



PROPOSED LOT 8318 PRAIRIE VALLEY RD
MLS® SUMMERLAND, BC V0H 1Z5 \$199,000

(250) 488-0804

WWW.TAMMYANTROBUS.COM

tammy@remax.net

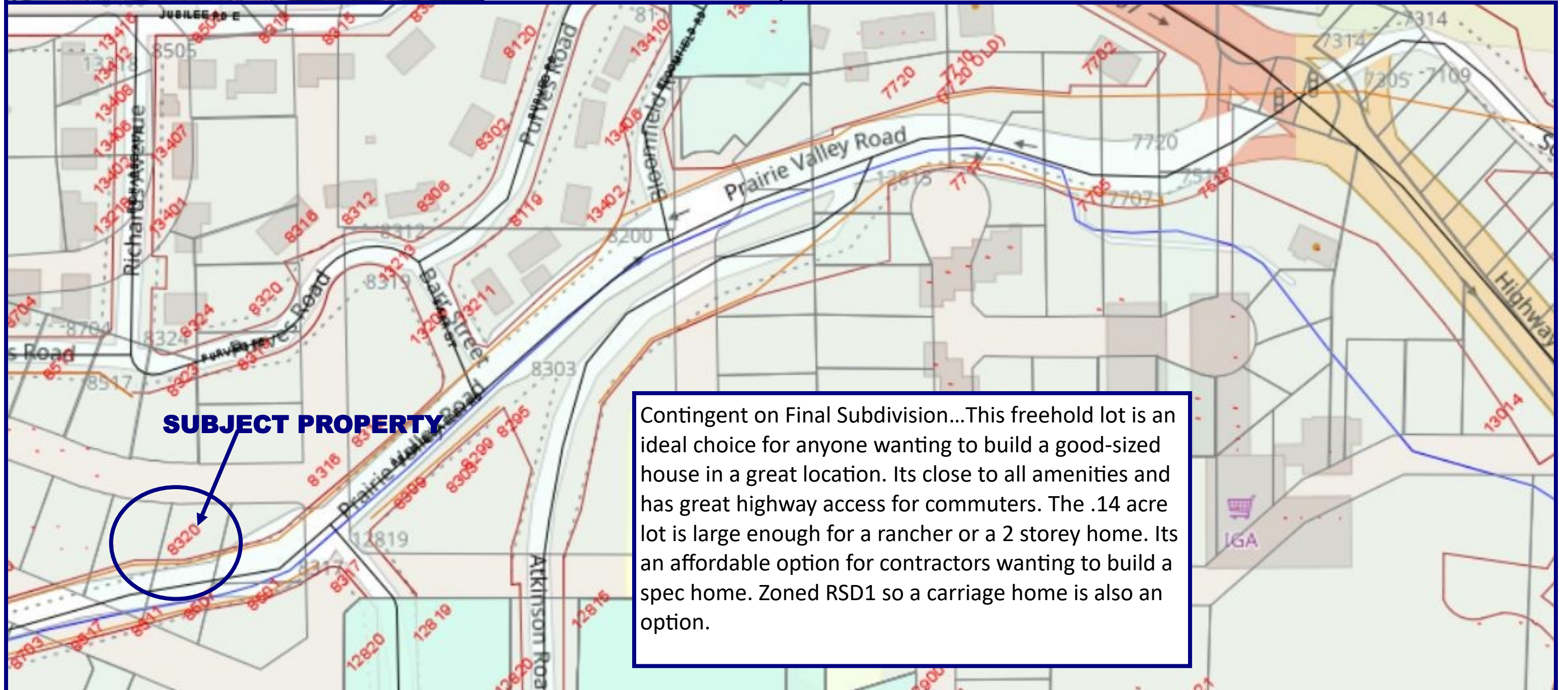


SPECIAL FEATURES

- Close to shopping, restaurants, schools etc
- Great Highway Access
- A Perfect Lot for a Basement Entry Walk-up
- Carriage Home is an Option

PROPERTY SPECIFICATIONS

LOT SIZE	.14 Acre	TAXES	Has not been assigned
GAS	At Lot Line	ZONING	RSD1
TELUS	At Lot Line	P.I.D.	Has not been assigned
SHAW	At Lot Line	VIEWS	Mountain View
SEWER	At Lot Line		



SUBJECT PROPERTY

Contingent on Final Subdivision...This freehold lot is an ideal choice for anyone wanting to build a good-sized house in a great location. Its close to all amenities and has great highway access for commuters. The .14 acre lot is large enough for a rancher or a 2 storey home. Its an affordable option for contractors wanting to build a spec home. Zoned RSD1 so a carriage home is also an option.