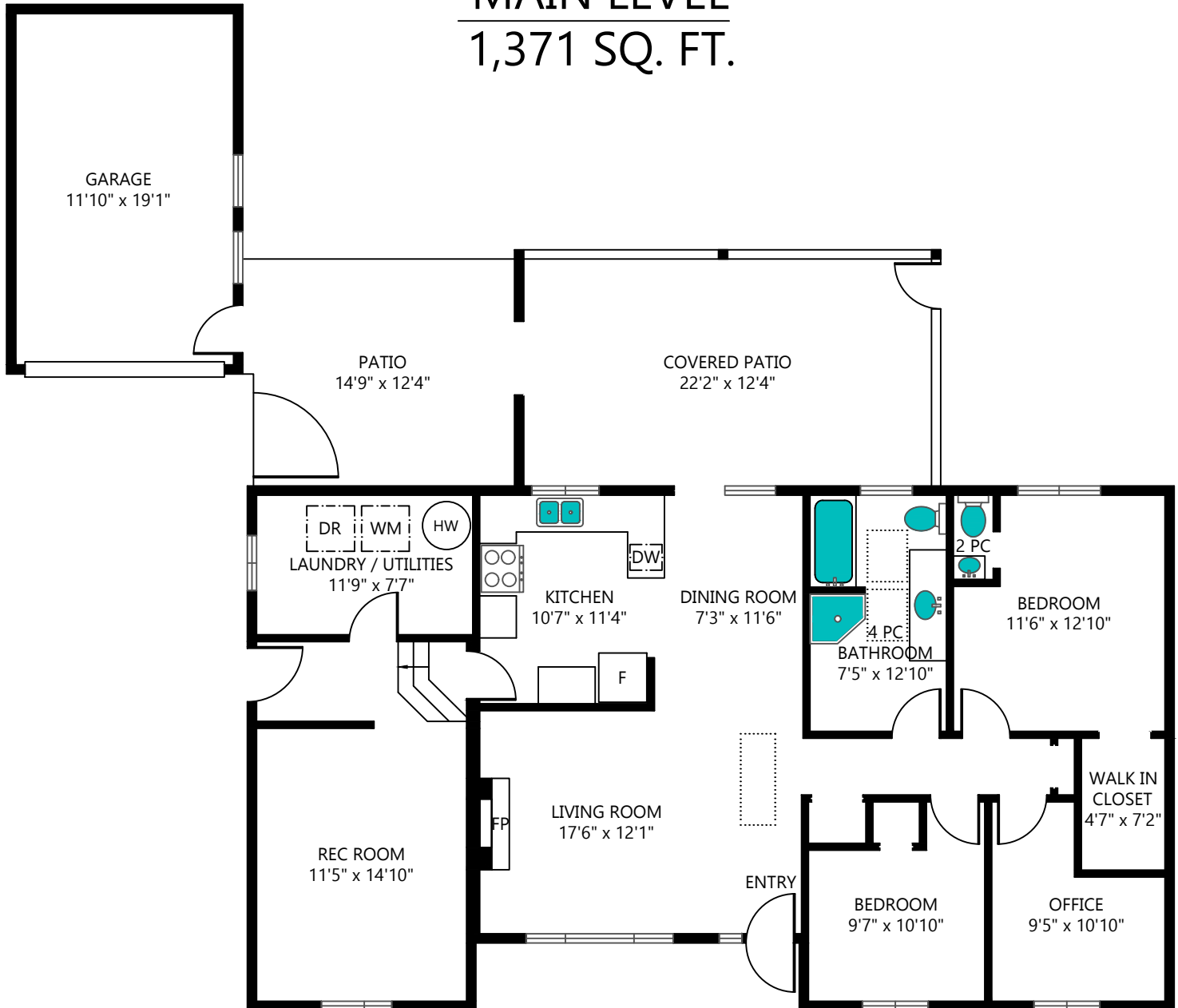


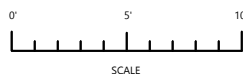
MAIN LEVEL

1,371 SQ. FT.



3418 LAIRD COURT, WEST KELOWNA, B.C. - V4T 1B6
SEPTEMBER 9, 2024

PREPARED FOR THE EXCLUSIVE USE OF - TAMMY ANTROBUS - FAIR REALTY
PLANS MAY NOT BE 100% ACCURATE, IF CRITICAL VERIFY ON SITE
COPYRIGHT OF PROPER MEASURE OKANAGAN VALLEY LTD. RESALE OR MODIFICATIONS WITHOUT
AUTHORIZED CONSENT IS PROHIBITED.



LEVEL	AREA (SQ. FT.)		
	FINISHED	GARAGE	PATIOS
MAIN	1,371	258	462
TOTAL	1,371	258	462